

CANYON TOWN CENTER MUPD

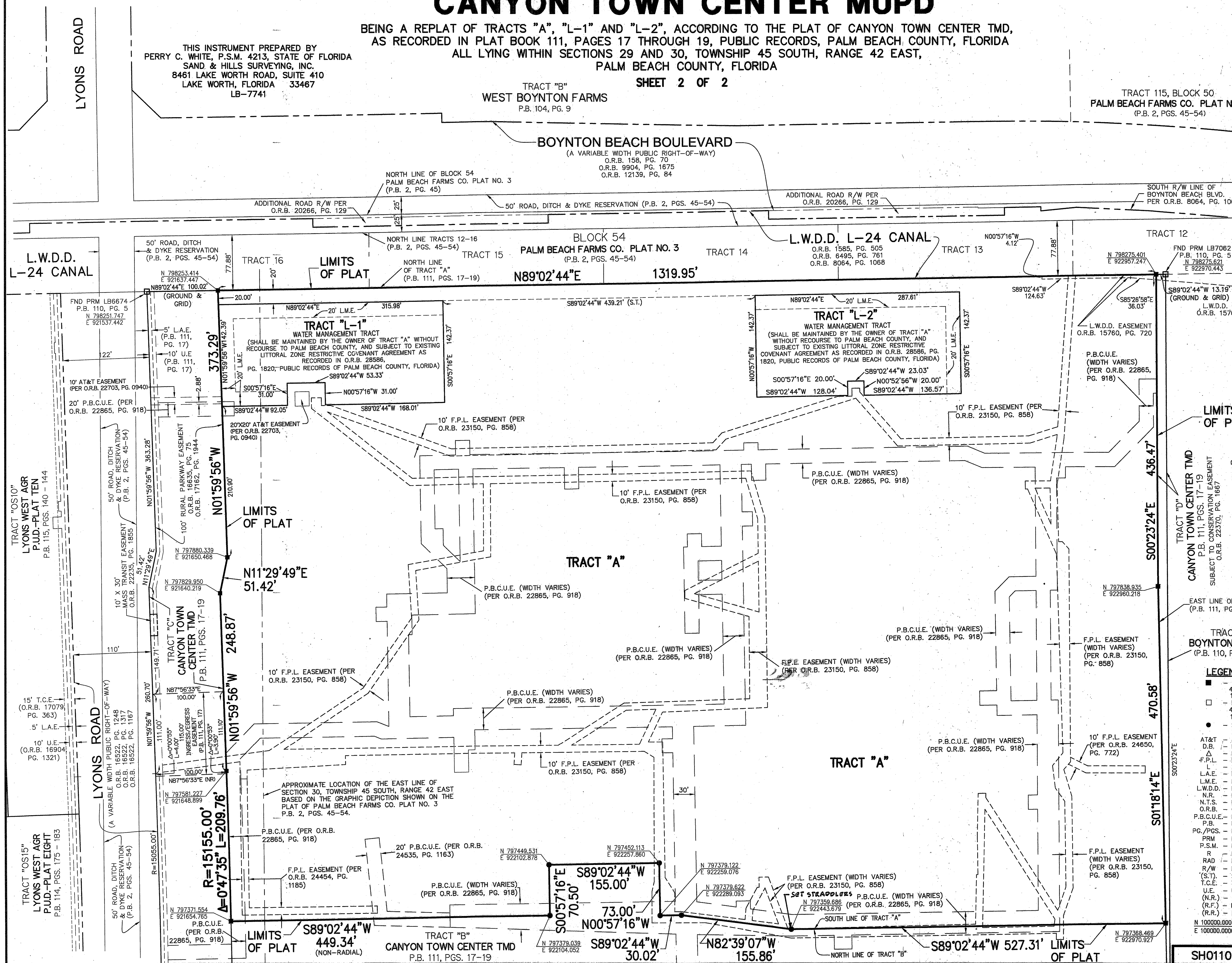
BEING A REPLAT OF TRACTS "A", "L-1" AND "L-2", ACCORDING TO THE PLAT OF CANYON TOWN CENTER TMD, AS RECORDED IN PLAT BOOK 111, PAGES 17 THROUGH 19, PUBLIC RECORDS, PALM BEACH COUNTY, FLORIDA ALL LYING WITHIN SECTIONS 29 AND 30, TOWNSHIP 45 SOUTH, RANGE 42 EAST, PALM BEACH COUNTY, FLORIDA

TRACT "B"
WEST BOYNTON FARMS
P.B. 104, PG. 9

SHEET 2 OF 2

THIS INSTRUMENT PREPARED BY
PERRY C. WHITE, P.S.M. 4213, STATE OF FLORIDA
SAND & HILLS SURVEYING, INC.
8461 LAKE WORTH ROAD, SUITE 410
LAKE WORTH, FLORIDA 33467
LB-7741

TRACT 115, BLOCK 50
PALM BEACH FARMS CO. PLAT NO. 3
(P.B. 2, PGS. 45-54)



LIMITS OF PLAT

CANYON TOWN CENTER TMD
P.B. 111, PGS. 17-19
SUBJECT TO CONSERVATION EASEMENT
O.R.B. 22370, PG. 1667

TRACT "B"
BOYNTON - LYONS
(P.B. 110, PGS. 5 - 8)

- LEGEND:**
- - SET PERMANENT REFERENCE MONUMENT 4"x4" CONCRETE MONUMENT WITH 1.5" DISK STAMPED L.B. #7741
 - - FOUND PERMANENT REFERENCE MONUMENT 4"x4" CONCRETE MONUMENT WITH 1.5" DISK STAMPED AS NOTED
 - - SET PERMANENT REFERENCE MONUMENT NAIL WITH 1.5" DISK STAMPED L.B. #7741
 - AT&T - AMERICAN TELEPHONE & TELEGRAPH
 - D.B. - DEED BOOK
 - Δ - DELTA ANGLE
 - F.P.L. - FLORIDA POWER & LIGHT
 - - - - - ARC LENGTH
 - L.A.E. - LIMITED ACCESS EASEMENT
 - L.M.E. - LAKE MAINTENANCE EASEMENT
 - L.W.D.D. - LAKE WORTH DRAINAGE DISTRICT
 - N.R. - NOT RADIAL
 - N.T.S. - NOT TO SCALE
 - O.R.B. - OFFICIAL RECORD BOOK
 - P.B.C.U.E. - PALM BEACH COUNTY UTILITY EASEMENT
 - P.B. - PLAT BOOK
 - PG./PGS. - PAGE/PAGES
 - PRM - PERMANENT REFERENCE MONUMENT
 - P.S.M. - PROFESSIONAL SURVEYOR AND MAPPER
 - R - RADIUS
 - RAD - RADIAL
 - R/W - RIGHT-OF-WAY
 - (S.T.) - SURVEY TIE
 - T.C.E. - TEMPORARY CONSTRUCTION EASEMENT
 - U.E. - UTILITY EASEMENT
 - (N.R.) - NON-RADIAL
 - (R.F.) - RADIAL TO FRONT LOT LINE
 - (R.R.) - RADIAL TO REAR LOT LINE
 - N 1000000.0000
E 1000000.0000 - DENOTES STATE PLANE COORDINATES